

Nursing Associates in Healthcare

Jenita Loheswaran – Registered Nursing Associate





Introduction

The Wound Management Clinic is a nurse-led clinic that is guided by the National Wound Care Strategy programme which promotes excellence for every patient, every time. Our ethos within the clinic is to treat everybody with respect and dignity, taking into consideration personal circumstances.

Our clinic



Mission and vision



Mission

To promote person-centered care
and independence



Vision

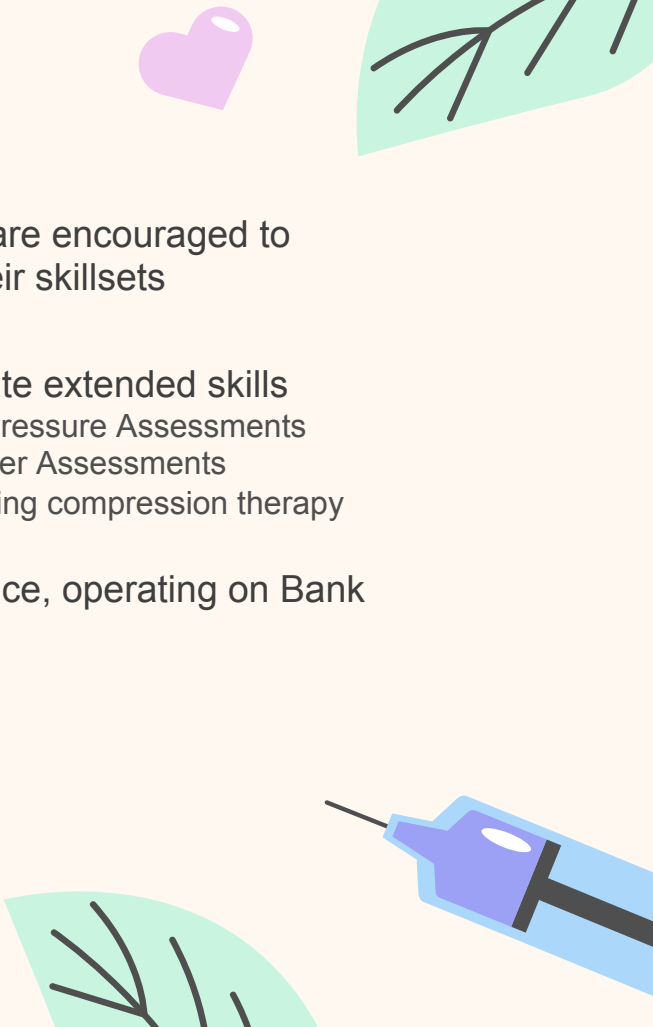
To do so through the holistic
management of (mostly) venous leg
ulceration





Advantages of our clinic



- The team are encouraged to expand their skillsets
 - Demonstrate extended skills
 - Toe Pressure Assessments
 - Doppler Assessments
 - Applying compression therapy
 - 7-day service, operating on Bank Holidays
- 




Key numbers

£8.3 billion

Estimated annual NHS cost of wound management

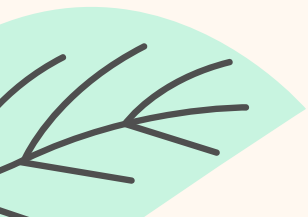


£5.6 billion

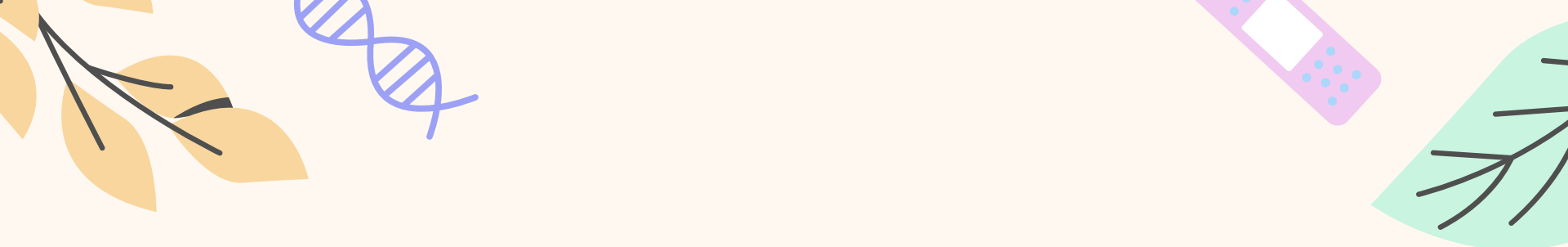
Associated with managing non-healing wounds



81%

Of the total annual NHS cost was incurred in the community





“We look at the **whole** patient and not just
the **hole** in the patient.”



—Robin Carlson PT CWS

Areas we cover



Leg Maintenance

A newly-established clinic supporting patients



Woundcare

OPD's biggest and busiest clinic



Tissue Viability


Utilising formularies to aid patient care



Audit

Using evidence-based research to inform care





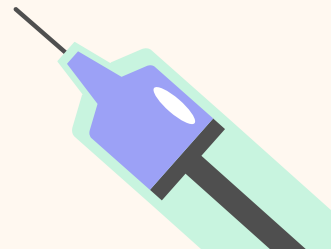
30%

Reoccurrence rate of leg ulcers in our patients





Patient care



We work with



Research




Tissue Viability



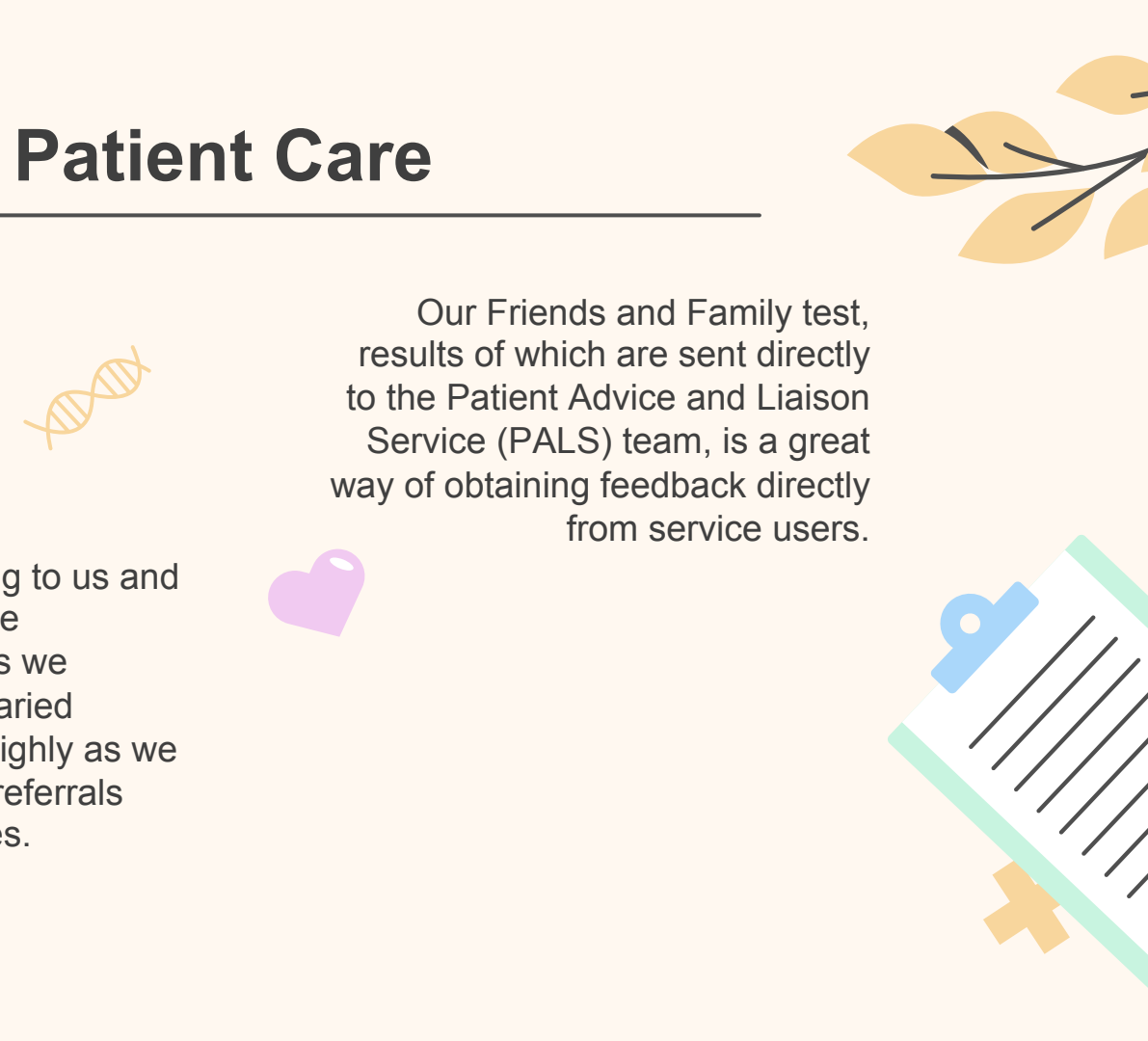
Podiatry



Patient Care



Our patients enjoy coming to us and always have such positive responses to the services we provide. As well as our varied clientele, GPs value us highly as we are constantly receiving referrals from them for our services.



Our Friends and Family test, results of which are sent directly to the Patient Advice and Liaison Service (PALS) team, is a great way of obtaining feedback directly from service users.

My journey



Student

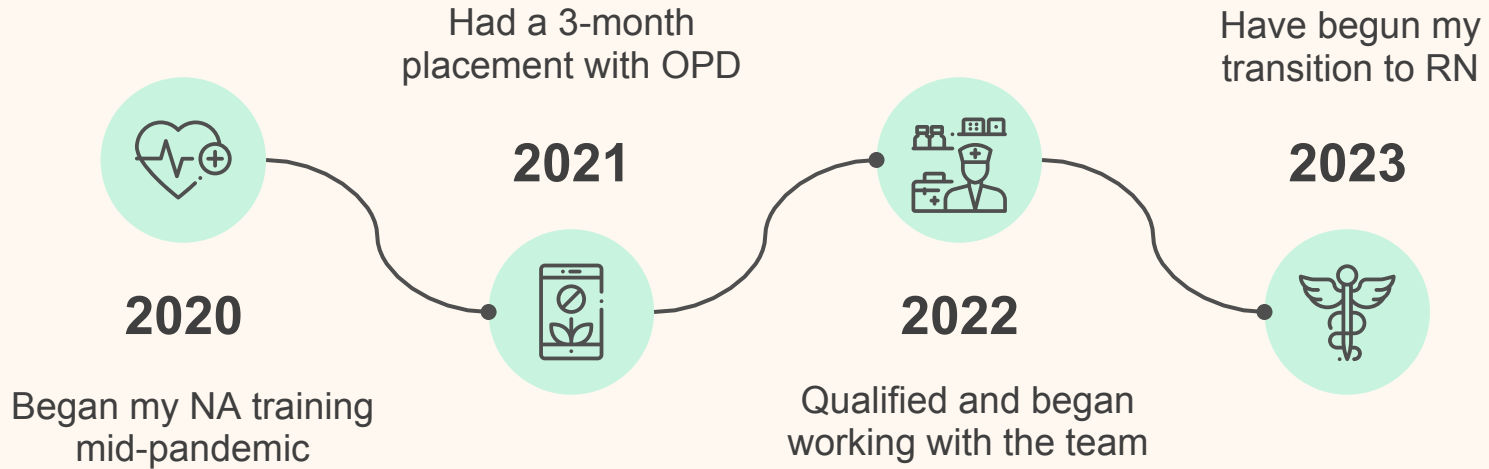
On placement with the WMC
team Oct-Dec 2021




Registrant

Began working with the WMC
team in Aug 2022

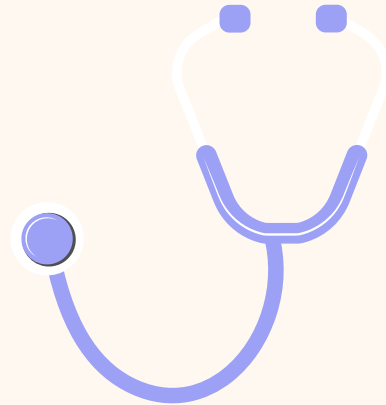
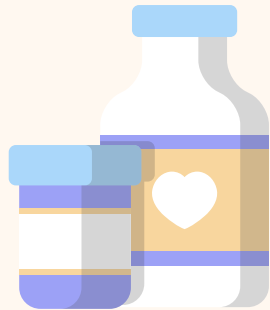
My journey

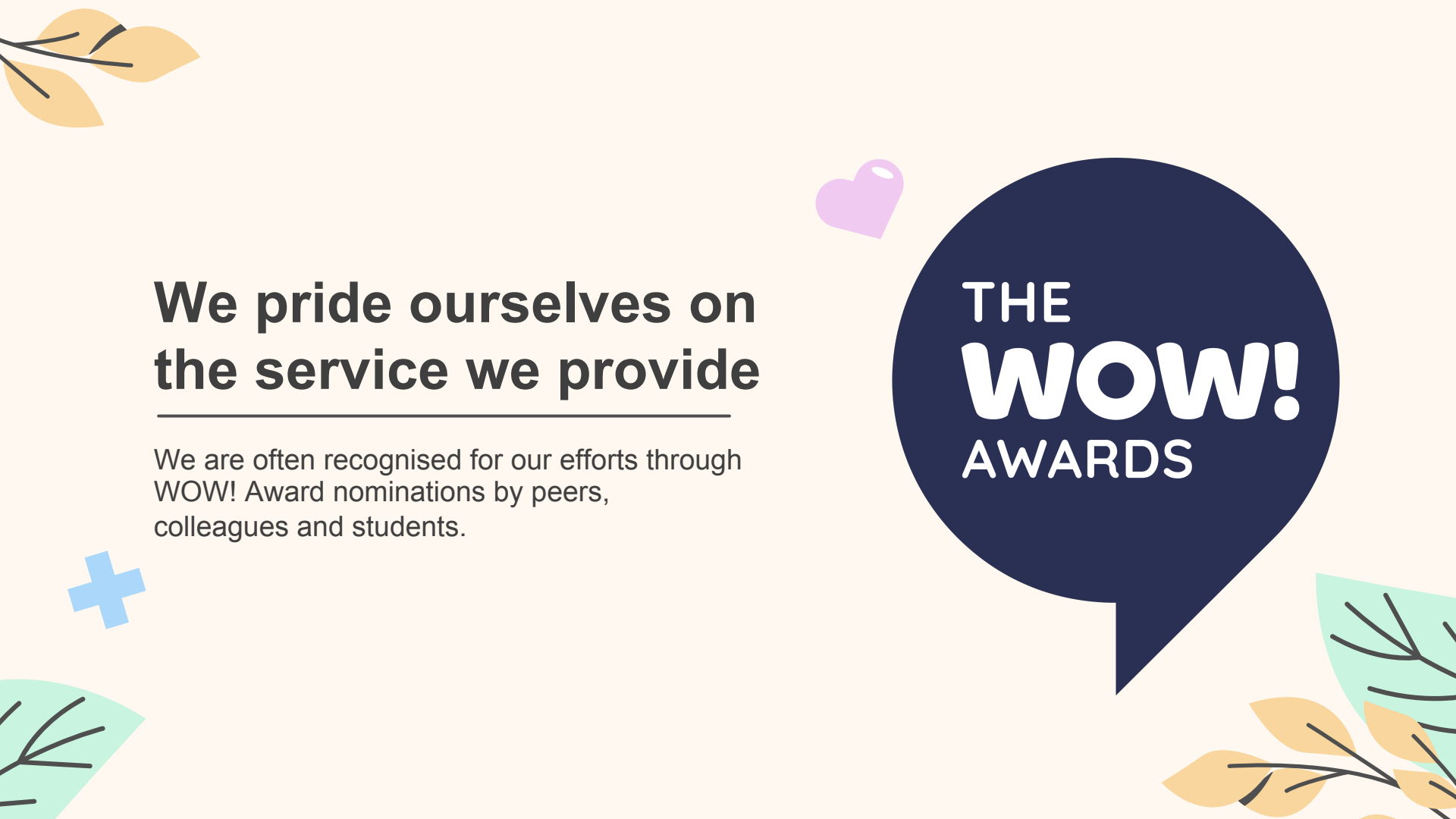


We can do more than people think!



A Nursing Associate is a member of the nursing team in England that helps bridge the gap between health and care assistants and registered nurses. We work with people of all ages, in a variety of settings in health and social care. The role contributes to the core work of nursing, freeing up registered nurses to focus on more complex clinical care. It's a stand-alone role that also provides a progression route into graduate level nursing.





We pride ourselves on the service we provide

We are often recognised for our efforts through WOW! Award nominations by peers, colleagues and students.



**THE
WOW!
AWARDS**

The background features a collection of colorful, stylized icons related to medicine and nature. In the top left, there is a white circular icon with a black outline. To its right are two capsules, one purple and one white with a yellow top. Further right is a white thermometer with a purple tip and a blue DNA double helix. In the top right corner, there are green and yellow leaves. On the left side, a purple and white stethoscope is visible. In the bottom left, there are more green and yellow leaves. At the bottom center, there is a white pill blister pack with several blue and pink pills. To the right of the blister pack is a blue heart icon and a pink bandage. In the bottom right corner, there is a white clipboard with a blue clip and several horizontal lines representing text.

The future...

A picture is worth a thousand words





Thank you



Cornwall Partnership
NHS Foundation Trust

CREDITS: This presentation template was created by **Slidesgo**, and includes icons by **Flaticon**, and infographics & images by **Freepik**

